



Automatic capacitors winding machine

METRONIC 4



Producing high quality capacitors on plastic core
for AC and power electronic applications with concentric winding option

Head office

Metar SA
Route de Montena 79
1728 Rossens
Switzerland
Phone +41 26 407 38 38
E-mail sales@metar-machines.com

China

Metar SA Beijing Office
Room C1205
Jin Yu International Mansion
No 48, West Wuangjing Road
Chaoyang District, Beijing China
Phone +86 10 64 78 73 74
E-mail saleschina@metar-machines.com

Worldwide leader in the manufacturing of capacitors winding machine

METAR swiss made machines

Product

▶ Winding dimensions	S-Mode	D-Mode	S-Mode (CW)	D-Mode (CW)
Minimum diameter	15 mm	15 mm	15 mm	15 mm
Maximum diameter	85 mm	85 mm	85 mm	85 mm
Minimum width	50 mm	25 mm	50 mm	25 mm
Maximum width	158 mm	79 mm ^②	158 mm ^①	81 mm ^①

① Including the barrier film ② (81.5 mm =option)

▶ Core dimensions	S-Mode	D-Mode	S-Mode (CW)	D-Mode (CW)
Minimum length [H]	50 mm	25 mm	50 mm	25 mm
Maximum length [H]	160 mm	80 mm ^③	160 mm	80 mm

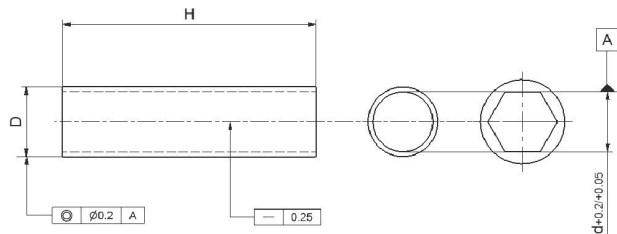
③ (82 mm =option)

▶ Hexagonal plastic core

Hex min/max [d]	4 to 10 mm
D min/max	6 to 15 mm

▶ Round paper core

d min/max	4 to 8 mm
D min/max	6 to 15 mm



Equipment

▶ Standard and optional equipment for

Metronic 4 Basic machine

1 burn-off and cover film included

▶ Standard equipment S-Mode

Quantity Designation

3	Reel carrier for rolls diameter 75 mm (3 inch)
1	Smooth (and linear) thermowelding device for cover film
1	Burn-off device for one side of one film
2	Rewinder for aluminium reel, inside diameter 33 mm or 40 mm (to be confirmed)
2	Aluminium roll for demetallization
1	Set of 3 mandrels for plastic core, hexagon 5 mm, outside diameter 9 mm (to be confirmed)
1	Set of special tools
1	Stainless steel cover film knife

▶ Optional equipment

Designation

- ▶ D-Mode
- ▶ DCW: Dual concentric winding system DS-Mode
- ▶ TCW : Triple concentric winding system DS-Mode, includes 1 burn off & DCW
- ▶ Edge guiding system for metallized film type DS-Mode
- ▶ Positioning device for metallized and / or cover film
- ▶ Equipment for S4/130-Mode, max. capacitor width 130 mm
- ▶ Equipment for S4/160-Mode, max. capacitor width 158 mm
- ▶ Independent Film tension
- ▶ Motor rotation inversion for metallized film
- ▶ Additional burn-off system
- ▶ Winding up to outside diameter on metallized film winding position
- ▶ Winding up to outside diameter on cover film winding position
- ▶ Winding on calculated capacitance
- ▶ Variable film tension during main winding
- ▶ Variable pressure on pressure roller during main winding
- ▶ Film tension from 40 to 680 cN for thin film
- ▶ Printing device
- ▶ Smooth unloading of bad element
- ▶ Small capacitor at the end of unwinder
- ▶ Reinforced pressure roller on B1
- ▶ 82mm (core length)