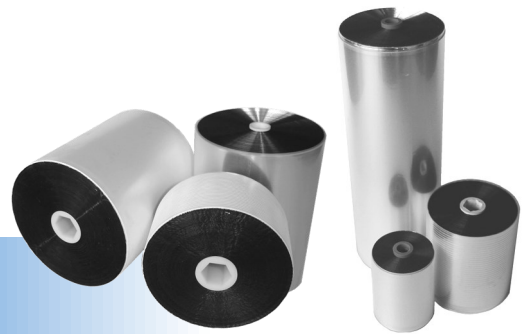




Automatic capacitors winding machine

MXL



**Producing high quality capacitors on plastic core
for AC and power electronic applications with concentric winding option**

Head office
Metar SA
Route de Montena 79
1728 Rossens
Switzerland
Phone +41 26 407 38 38
E-mail sales@metar-machines.com

China
Metar SA Beijing Office
Room C1205
Jin Yu International Mansion
No 48, West Wuangjing Road
Chaoyang District, Beijing China
Phone +86 10 64 78 73 74
E-mail saleschina@metar-machines.com

Worldwide leader in the manufacturing of capacitors winding machine

METAR swiss made machines

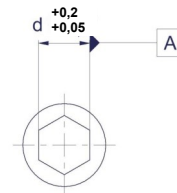
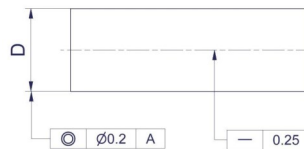
Product

▶ Winding Dimensions	S-Mode	D-Mode
Minimum diameter	30 mm	30 mm
Maximum diameter	130 mm	130 mm
Minimum width	50 mm (30mm) ^①	25 mm
Maximum width	158 mm	79 mm

▶ Core Dimensions	S-Mode	D-Mode
Minimum length	50 mm (34mm) ^①	25 mm
Maximum length	160 mm	80 mm

① Dimension upon request

▶ Hexagonal plastic core	
Hex min [d]	5 mm
Hex max [d]	13 mm
D min	9 mm
D max	21 mm



Equipment

▶ Standard and optional equipment for M X L Basic machine

1 burn-off and cover film included

▶ Standard equipment S-Mode

Quantity	Designation
3	Reel carrier for rolls diameter 75 mm (3 inch)
1	Smooth (and linear) thermowelding device for cover film
1	Burn-off device for one side of one active film
2	Dereeler for aluminium reel, inside diameter 33 mm or 40 mm (size to be confirmed)
2	Aluminium roll for demetallization
1	Set of 3 mandrels for plastic core, hexagon 5 mm, outside diameter 9 mm
1	Set of special tools
1	Evacuation channel for bad product
1	Smooth unloading product
1	Hot wire cover film cutter

▶ Optional equipment

Designation

- ▶ D-Mode
- ▶ DCW / TCW Dual and triple Star connection, concentric winding system "D-Mode" or "S-Mode"
- ▶ TCW for Delta connection configuration
- ▶ Edge guiding system for metallized film type "DS-Mode"
- ▶ Positioning device for metallized film and cover film
- ▶ Equipment for S4/130-mode, max. capacitor width 130 mm ("S-Mode" & "DS-Mode")
- ▶ Equipment for S4/160-Mode, max. capacitor width 158 mm (only for "S-Mode")
- ▶ Independent film tension
- ▶ Motor rotation inversion for metallized film
- ▶ Additional burn-off system with alu reversal for second active film (one side)
- ▶ Additional burn-off system, demetallizing one double active film (both sides)
- ▶ Winding up to outside diameter on metallized film winding position
- ▶ Winding up to outside diameter on cover film winding position
- ▶ Winding on calculated capacitance
- ▶ Variable film tension during main winding
- ▶ Variable pressure on pressure roller during main winding
- ▶ Film tension from 40 to 680 cN for thin film
- ▶ Printing device
- ▶ Data management system
- ▶ New edge guiding generation for plain film (>4µm)
 - Pre-production wobbling measurement at the reel
 - Series Design capacitor ability
 - Transparent edges ability
- ▶ Calculated diameter winding
- ▶ Small capacitor at the end of unwinder
- ▶ Stainless steel cover film knife